



CARE AND MAINTENANCE

Effective January 2021





MELAMINE

**DOORS
PANELS &
KICKBOARDS**

+LAMINATE BENCHTOPS

GENERAL

Melamine and Laminate are hard-wearing materials, but like all materials, they can be damaged if used without some care and maintenance. The following information should help you to maintain these surfaces with the minimum of time and effort. Note: All substrates used by Amorini are moisture-resistant, NOT water-proof.

CLEANING

A wipe over with a clean soft damp cloth should be sufficient to keep all melamine and laminate surfaces clean. It is recommended that you use Unika Laminate Worktop Cleaner. Unika Laminate Surface Cleaner is a ready to use everyday specialist cleaner for laminate worktops, doors and panels, which tackles everyday grease and grime. If using other multi-purpose cleaners, ensure they contain no abrasive, strongly acidic or alkaline ingredients.

SCRATCHES AND CUTS

Chopping and cutting directly on to the surface can damage the surface. To prevent this happening, a cutting board or chopping board should be used. A protective mat should always be used with heavy metallic pots (or pots made from clay or ceramic materials). Sliding of these objects can cause scuffing on the surface. Fine scratches or scuff marks can often be removed by the application of a good quality car polish. A small inconspicuous area should be trialled prior to full application.

BENCHTOP JOINTS

Particular care should be exercised with all benchtop's joints. Whilst the benchtops are manufactured using quality Moisture Resistant (MR) substrate, swelling of the joints may occur if they are subject to water or heat. Any water spills that occur near the joints should be cleaned up immediately. Avoid the use of Irons, kettles, fry pans, toasters, coffee machines, steamers etc. over or near the joints. These appliances require boards under them as radiant heat may damage the surface and joints. The excessive heat causes the material to shrink, therefore opening the join and allowing moisture to set in.

PRIMEBOARD XTREME

**DOORS
PANELS &
KICKBOARDS**



GENERAL

Noble, but robust: With PrimeBoard XTreme, Pfleiderer presents a decorative coating panel that combines attractive appearance, optimum processability and high durability. Whether PrimeBoard XTreme Matt or PrimeBoard XTreme High Gloss: an innovative multi-layer coating technology guarantees high colour stability and lightfastness with outstanding material properties for problem-free processing. Like all materials, they can be damaged if used without some care and maintenance. The following information should help you to maintain these surfaces with the minimum of time and effort. Note: All substrates used by Amorini are moisture-resistant, NOT water-proof.

Primeboard surfaces are supplied with a tried and tested UV protection system. In the case of exposed applications such as shop windows, glazed conservatories or generally very large window areas with high light flow and thereby high UV and temperature influence, and accelerated ageing of the material can occur.

CLEANING

It is recommended that you use Unika Super Matte Laminate Cleaner in conjunction with a micro fibre cloth to keep all PrimeBoard Xtreme surfaces clean. Unika Super Matte Laminate Cleaner is specially formulated for Super Matte Laminate worktops, wall panels and doors which are prone to fingerprints. Super Matte Cleaner leaves it fingerprint and streak free. If using other multi-purpose cleaners ensure they contain no abrasive, strongly acidic or alkaline ingredients. A wipe over with a clean soft damp cloth should be sufficient for daily cleansing of PrimeBoard Xtreme doors, panels and kickboards.

A modern kitchen and dining area featuring light wood-grain cabinets, a white countertop, and a wooden dining table with black chairs. A large glass vase with a candle sits on the table. The image is overlaid with a large white triangle on the left and a dark grey triangle at the bottom right.

SENOSAN

**DOORS
PANELS &
KICKBOARDS**

GENERAL

Whether scratch resistant or chemical resistant, environmentally friendly or economically efficient – the acrylic films from Senosan GmbH form the basis of reliable and long-lasting acrylic products which can be used in many different areas of application. Like all materials, they can be damaged if used without some care and maintenance. The following information should help you to maintain these surfaces with the minimum of time and effort. Note: All substrates used by Amorini are moisture resistant, NOT water-proof.

Senosan surfaces are supplied with a tried and tested UV protection system. In the case of exposed applications such as shop windows, glazed conservatories or generally very large window areas with high light flow and thereby high UV and temperature influence, and accelerated ageing of the material can occur.

CLEANING

It is recommended that you use Unika Super Matte Laminate Cleaner in conjunction with a micro fibre cloth to keep all Senosan surfaces clean. Unika Super Matte Laminate Cleaner is specially formulated for Super Matte Laminate worktops, wall panels and doors which are prone to fingerprints. Super Matte Cleaner leaves it fingerprint and streak free. If using other multi-purpose cleaners ensure they contain no abrasive, strongly acidic or alkaline ingredients. A wipe over with a clean soft damp cloth should be sufficient for daily cleansing of Senosan doors, panels and kickboards.

mirostone®

MODIFIED ACRYLIC



Everyday Cleaning and General Care

Mirostone® is a non-porous surface meaning that it is water and stain resistant. If you do spill something on your surface, we recommend wiping the worktops with warm soapy water a damp cloth. **Please do not use an abrasive cleaner such as Spray and Wipe or Jiff as they may scratch and/ or dull your Mirostone worktops.**

In addition, Unika Solid Surface Worktop Cleaner is specially formulated to remove the most stubborn stains on your tops. This can be purchased directly from your Mirostone® supplier.

Whilst Mirostone® is tough, it is not indestructible. Use of the product outside of the guidelines referred to in the installation guide can cause unnecessary damage. We always recommend using a cutting board when preparing food and never cutting directly on the Mirostone® surface to avoid blunting kitchen knives or damaging the surface of your benchtop.

Heat Resistance

Mirostone® is heat resistant, however like most solid surface worktop materials, Mirostone® can be damaged by sudden and rapid surface temperature changes. We always recommend placing hot pots, oven trays and fry pans onto a wooden chopping board or similar object to absorb the heat. We also recommend that electric fry pans and slow cookers are also used on a similar object and not directly on the worktop as these can also produce extremely high levels of heat.

SCRATCHES AND CUTS

Chopping and cutting directly on to the surface can damage the surface. To prevent this happening, a cutting board or chopping board should be used. With heavy metallic pots (or pots made from clay or ceramic materials), a protective mat should always be used

More Information

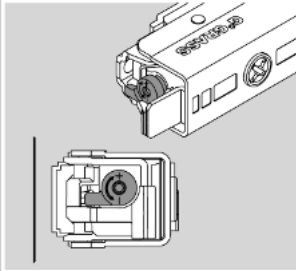
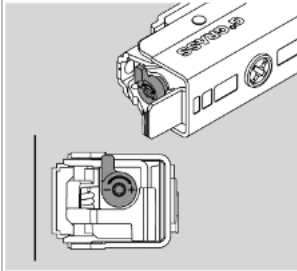
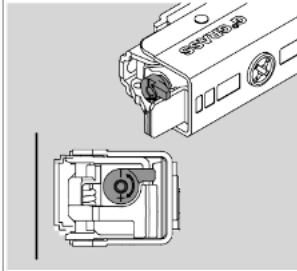
Please take time to read through the information above and if you have any queries, please don't hesitate to contact your Mirostone supplier or feel free to visit our website www.mirostone.com.au



HINGES & DRAWER SYSTEMS



TOOL-FREE DAMPER ADJUSTMENT

Low level	Medium level (factory setting)	High level
		
<p>Adjustment lever points</p> <ul style="list-style-type: none">• towards cabinet wall <p>Suitable for:</p> <ul style="list-style-type: none">• small, light-weight doors	<p>Adjustment lever points</p> <ul style="list-style-type: none">• downwards when fitted on the left and upwards when fitted on the right <p>Suitable for:</p> <ul style="list-style-type: none">• standard doors	<p>Adjustment lever points</p> <ul style="list-style-type: none">• into the cabinet <p>Suitable for:</p> <ul style="list-style-type: none">• large, heavy doors
<p>The damping force of each hinge can be set individually. A simple lever adjustment is all that is required to increase or reduce the damping force as required.</p>		

GENERAL

Grass produces quality products, made exclusively in Austria and Germany, and are internationally successful, with more than 200 distributors around the globe. Grass hinge, runner and drawer systems are brand-name products which bring the furniture of renowned brands and exclusive cabinetmakers to life.

The Grass brand stand for visionary product developments, top quality, technical precision, progressive design and exemplary protection of the environment.

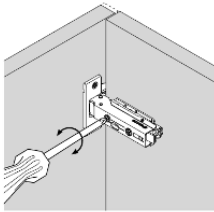
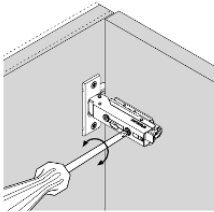
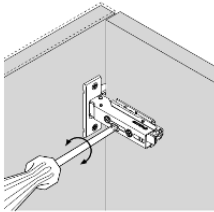
TIOMOS HINGE

The entire Tiomos damper technology is integrated concealed in the hinge arm. The inner workings of this high-tech hinge are hidden away, performing like Swiss clockwork, and appeal with their unique damping characteristics. Thanks to the fact that it looks the same - and is built the same - it is possible at any time to combine hinges with and without Soft-close.

CLEANING

In most cases a soft cloth moistened with pure water is sufficient. In general, do not use rough cleaning sponges or hard brushes. Scrubbing milk and strong cleaning agents or solvents should also be avoided. In case of doubt, you should first test the cleaning agent on an inaccessible spot.

DOOR ADJUSTMENTS (APPLIES TO ALL TIOMOS HINGES)

Description	Side adjustment with limit stop +/- 2mm	Convenient depth adjustment via worm gear +3/-2 mm	Height adjustment with mounting plate +/- 2 mm
<p>The height adjustment option depends on the type of mounting plate. All adjustments can be carried out independently of each other.</p> <p>When using a -2 mounting plate height, side adjustment is restricted.</p>			

NOVO PRO SCALA

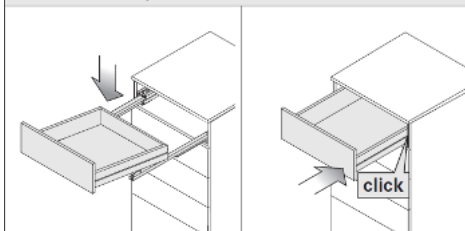
The design of Nova Pro Scala is characterised by reduction to the essential; to clear design principles as well as perfect unity of form and function. The simplicity of form with its distinct lines, right angles and small radii lends the double-wall metal drawer sides a timeless, technically functional look.

The special character of Nova Pro is based on its perfection through to the last detail and the modular system concept. Everything is focused on perfect function, top quality and lasting value – from the precision craftsmanship of every individual part as well as the colour and surface finishes.

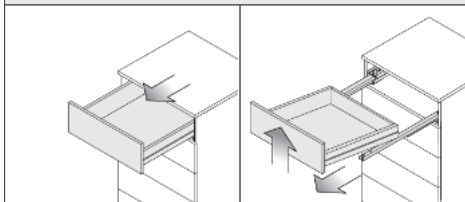
CLEANING

The high-quality metal frames of GRASS are made of powder-coated steel, inner panels of coated aluminum. The powder coating makes the surface resistant to scratches. Light grease stains such as fingerprints can be removed with a soft cloth. Powder coatings must not be treated with strongly acidic or alkaline cleaning agents or strong solvents such as acetone or petrol. Do not use abrasives or scratching materials such as cleaning sponges. Long reaction times should also be avoided.

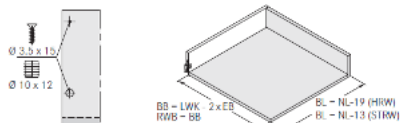
Schubkasten einhängen/Inserting the drawer/Insertion du tiroir/Aggancio del cassetto/Inserción del cajón



Schubkasten aushängen/Removing the drawer/Décrochage du tiroir/SGancio del cassetto/Extracción del cajón



Zuschnittmaße/Cutting dimensions/Cotes de découpe/Misure di sezionatura/ Medidas de corte



Verstellung/Adjustment/Réglage/SGancio del cassetto/Extracción del cajón

